

KOCHIA? Fight back.



Reclaim your toughest acres with Ducks Unlimited Canada's Marginal Areas Program (MAP).

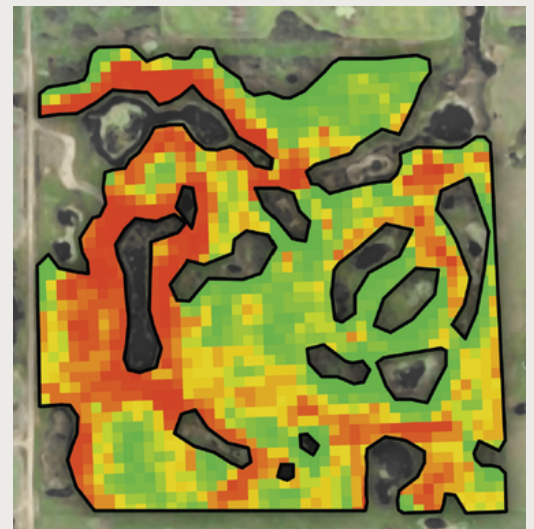
Herbicide-resistant kochia is spreading fast across Saskatchewan—and it's not going away. But there is a solution. Seeding perennial forages in weed-prone and saline areas can break the cycle and protect your most productive acres.

It's about making more money by farming less land and keeping your best field areas weed-free and productive.

Why seed forages with MAP?

- **Reduce herbicide-resistant weed pressure.**
- Capitalize on **haying opportunities** on unproductive annual cropland.
- **Soil health** and **pollinator** community benefits!
- **Custom forage seeding** available—no stress, no scramble.
- Close to **\$400/acre** in program incentives available.
- **Expert support** from DUC agronomists with experience establishing forage in tough conditions.
- Results you can trust—we've helped seed **more than 20,000 saline acres** in Saskatchewan!

**Your toughest acres can work for you—
not against you. Let us show you how.**



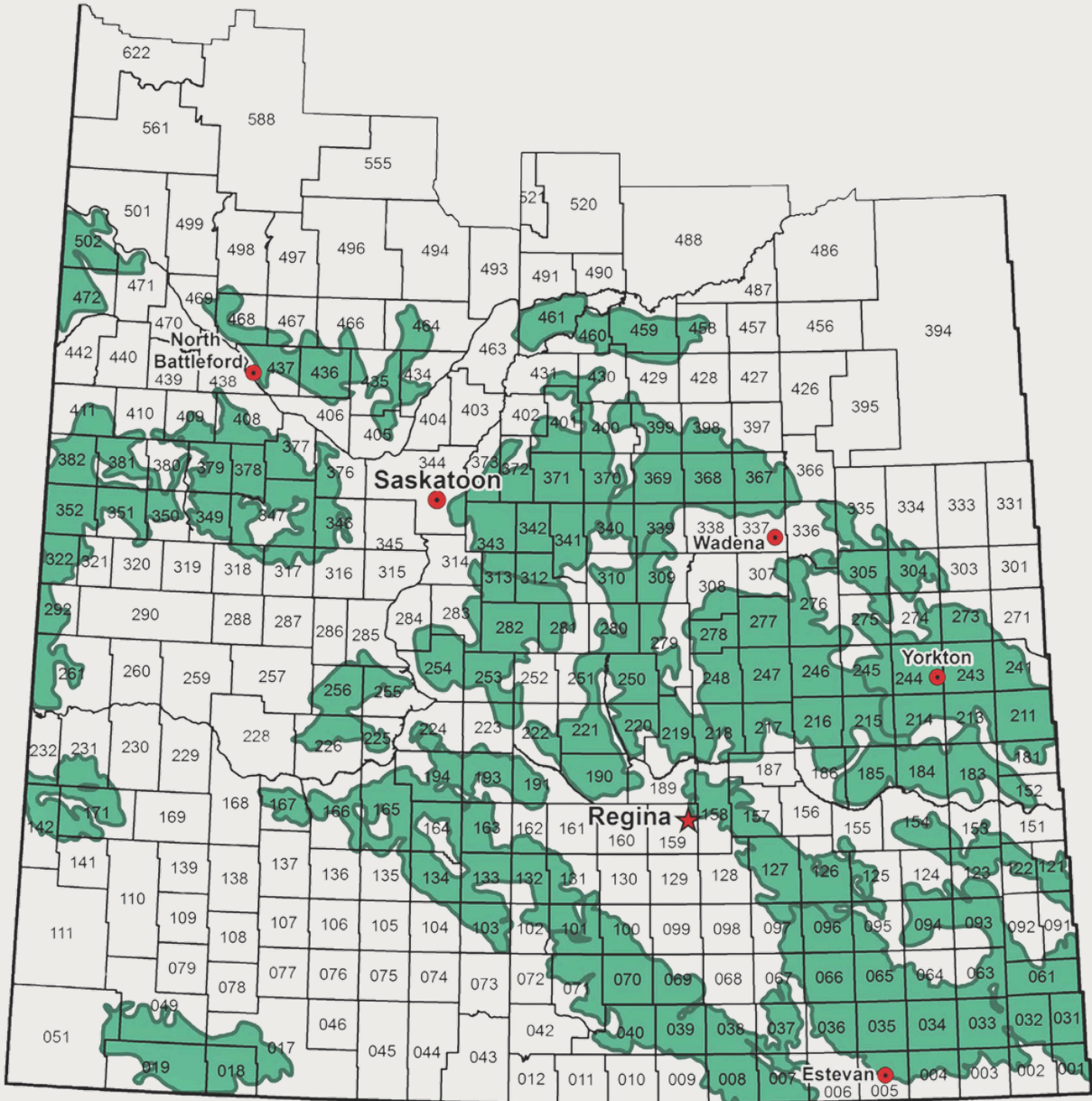
*Recoup an average of **\$70 acre** in lost input costs when you remove your least productive areas from annual crop production.*



Get DUC to arrange custom forage seeding and get that seed in the ground—no stress, no scramble.



DUC Program Delivery Areas



Your toughest acres can work for you—not against you. Let us show you how.

1-866-252-DUCK

ag.ducks.ca

du_regina@ducks.ca